



Louvre Light System

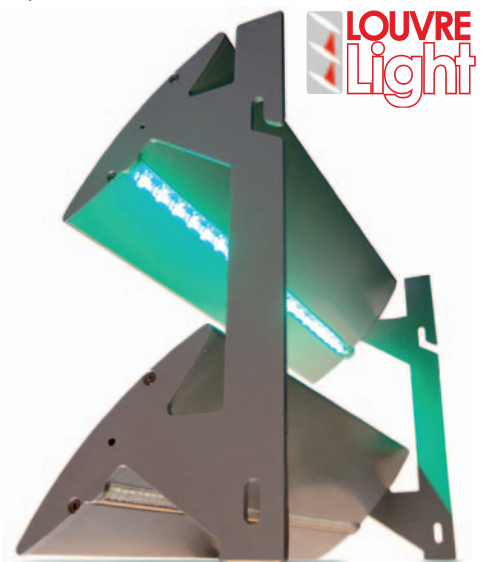


Par Louvre Systems are proud to announce Louvre Light - a completely new concept for the external illumination of building façades . By combining the practical merits of external solar shading louvres together with an extremely versatile, aesthetically pleasing and cost-effective LED lighting system, a completely new multifunctional product has been created!

Many new buildings now require external solar shading systems to comply with Part L2 of the Building Regulations concerning the solar overheating of buildings. These systems hitherto have only performed during daylight hours. Now they can perform at night too by incorporating intelligent lighting displays that can cover part or all of the louvre screening. The overall effect of this combination of light, colour and reflective imagery is nothing less than breathtaking and brings a new dimension to the building at night!

A multitude of benefits...

- Your building makes the visual statement you want, day and night!
- Lighting can be programmed as signage or moving & changing light displays
- Low energy illumination provides a safe and secure internal environment.
- Louvre Light can be linked to Fire/burglar alarms and the Building Management System.
- Can also be powered from wind turbines and photo voltaic cells.



Louvre Light from Par Louvre Systems - Bespoke by design.